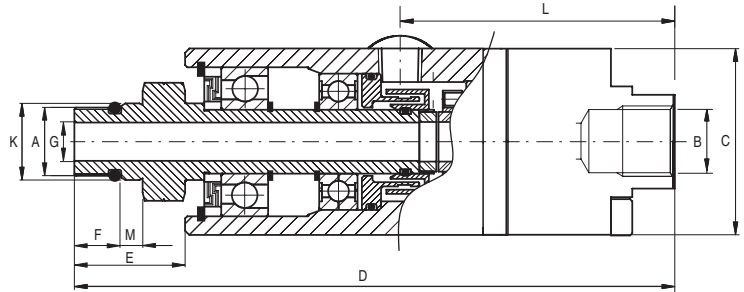


Type GX/GXA

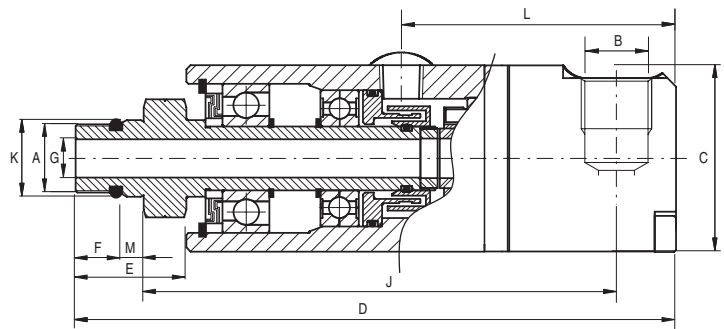
Dry running

GX

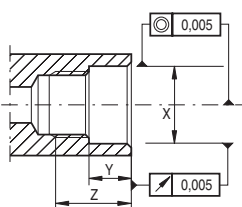


Type	A	B	C	D	E	F	G	K	L	M	X	Y	Z	Weight (Kg)
GX009013980	5/8" - 18 UNF LH	3/8" NPT	44	144	29	14	9	16,650/16,645	65	5	16,662/16,652	8,5	20	0,6
GX009013981	M16 X 1,5 LH	3/8" BSP	44	141	26	11	9	17,994/17,983	65	5	18,007/17,997	8,5	17	0,6

GXA

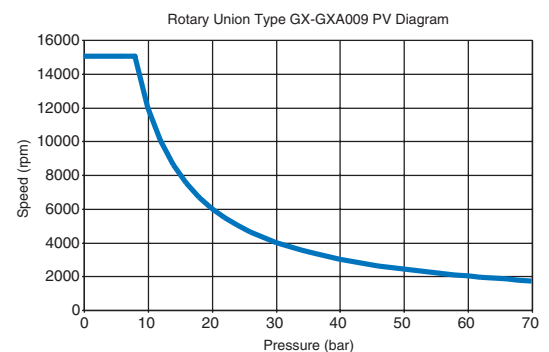


Type	A	B	C	D	E	F	G	J	K	L	M	X	Y	Z	Weight (Kg)
GXA009013982	5/8" - 18 UNF LH	3/8" NPT	44	144	29	14	9	114	16,650/16,645	65	5	16,662/16,652	8,5	20	0,6
GXA009013983	M16 X 1,5 LH	3/8" BSP	44	141	26	11	9	111	17,994/17,983	65	5	18,007/17,997	8,5	17	0,6



Spindle Detail

Pressure (BAR)	Temperature (°C)	RPM
70	120	10.000



Features and Benefits

- ▶ Auto-Off™ seal device permits dry running
- ▶ Optimised seal balance ratio for minimal friction
- ▶ Precision ball bearings widely spaced to eliminate wobble and vibration
- ▶ Labyrinth seal and drain holes protect bearings
- ▶ Anodised aluminum body
- ▶ Tungsten carbide seal faces resist wear and thermal shock
- ▶ Reduced coolant misting for improved air quality